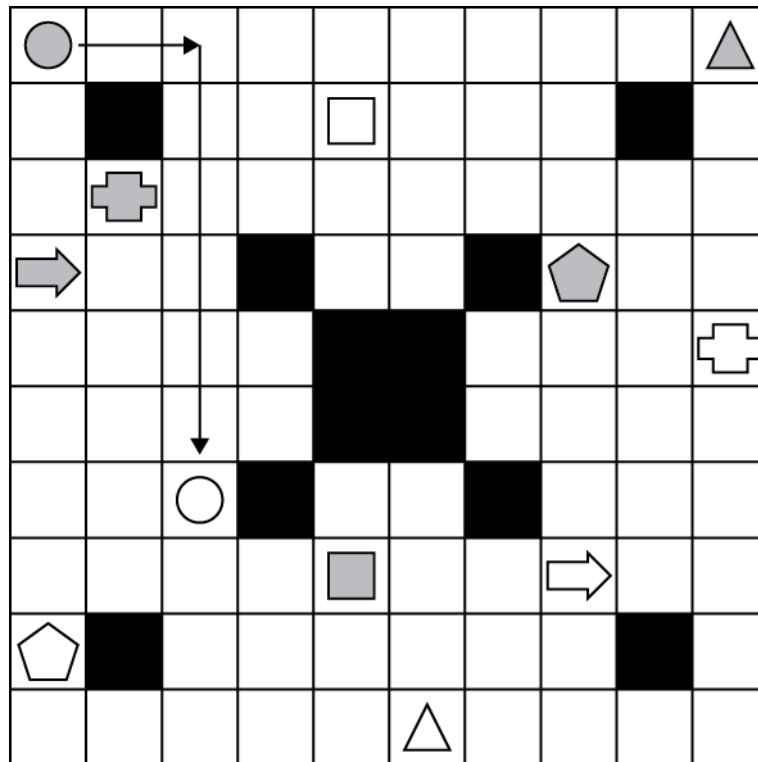


The grid shows some grey and white copies of the same shapes.



Draw arrows on the grid to show how each grey shape could have been moved to where the white copy of the shape is.

You can't make a translation across a black square or across another shape!

Describe the translations simply. An example has been done for you.

1 Circle: 2R, 6D.

2 Triangle:

3 Square:

4 Cross:

5 Arrow:

6 Pentagon:

7 Add a shape of your own. Translate it somewhere.

Record your translation.